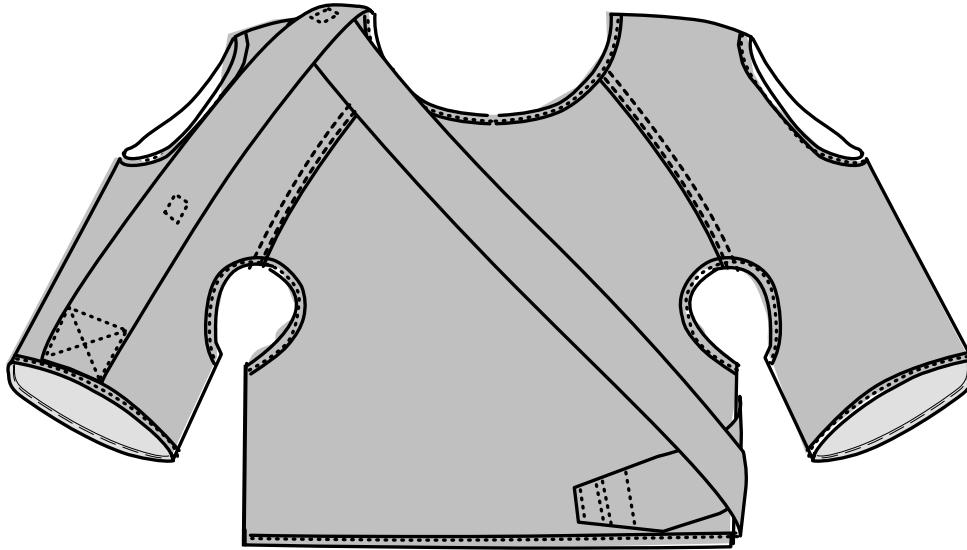
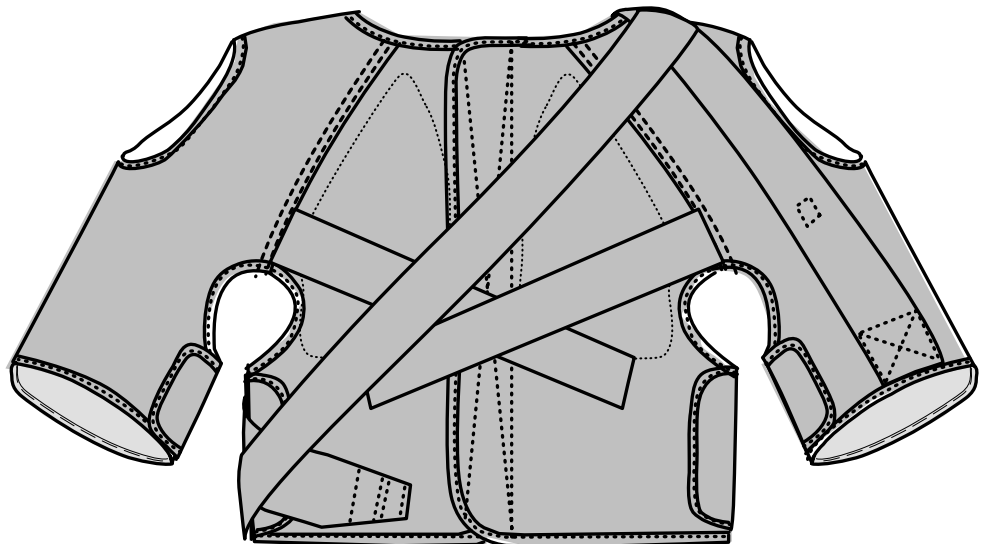


# The Ark Tyler Brace



FRONT



BACK

patent pending

## Therapeutic Application:

- Stabilize the scapula against the thoracic wall.
- Prevent overstretching of the serratus anterior muscle.
- Support shoulder joint.
- Align humeral head to glenoid fossa.
- Decrease load on tissues.
- Minimize subluxation.
- Pain reduction.

## Function:

- Protect shoulder girdle during functional activities and maintain joint/tissue integrity.
- Improve active shoulder control and strength through scapular support.

## Sizes:

- 3yrs. - Adults

\*In order to avoid potential injury due to the misuse of this brace, parents/patients understand and agree that the brace should only be applied after receiving the proper training for the use of this product from their physician/therapist.

PLEASE NOTE: Upon completion of the patient's brace, it will be shipped directly to his/her therapist for the initial fitting. Parents/patients will be contacted two days prior to the ship date to confirm the scheduled therapy session.